



LOW-DIVERGENCE LED BEACON

MBL 400-LD



The MBL 400-LD is a LED flashing beacon of medium and long range, with a great optical output, providing light beams of high precision. Its luminous source consists of high-power LED diodes, obtaining a range of up to 24 nautical miles. Intended to be placed in on-shore aids-to-navigation locations, such as poles and towers, with a minimum maintenance, as well as hard-to-reach sites or under extreme environmental conditions.

Fitted with a high-precision lens made from UV-resistant acrylic and protected with a shock-resistant tempered glass lens cover. Manufactured with high-quality and resistant materials, the MBL 400-LD provides a long service life under the harshest marine conditions.

Designed according to IALA Recommendations.

FEATURES

- ✓ State-of-the-art LED technology.
- ✓ High-efficiency luminous system.
Up to 16 nm (T=0.74), 24 nm (T=0.85).
- ✓ Vertical divergence of 2° (50%Io).
- ✓ UV-stabilised circular acrylic lens.
- ✓ Average operation lifetime over 15 years.
- ✓ Photocell adjustable in lux.
- ✓ IP 67 watertightness degree (immersion resistant).
- ✓ Linear adjustment of luminous intensity.
- ✓ Double RS-232 serial port for setting adjustments by PC and remote monitoring system.
- ✓ Programming, configuration and operating status via PC, IR programmer or Bluetooth.
- ✓ Short-circuit, reverse-polarity, over-temperature and transient over-voltage protections.

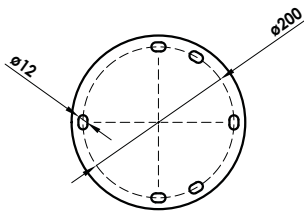
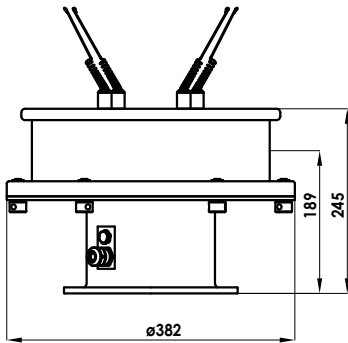


LOW-DIVERGENCE LED BEACON

MBL 400-LD



Specifications subject to change without previous notice.



| Optical System | |
|----------------------|--|
| Light source: | Ultra-bright LED diodes, with high-precision acrylic lens. |
| Luminous range: | Up to 16 nm (T=0.74) 24 nm (T=0.85). |
| Colours available: | White, green, red and blue. |
| Vertical divergence: | Up to 2° (50% Io). |
| LED average life: | More than 100,000 hours. |
| Power supply: | From 8 to 32V. |
| Lantern consumption: | From 10 to 113W. |

| Electronic control | |
|---|------------------------------------|
| Flash rhythms: | 256 (6 nos. user selectable). |
| Day/night threshold: | Adjustable between 10 and 400 lux. |
| Settings: | PC / IR programmer / Bluetooth. |
| Luminous intensity adjustment: | Linear, between 10 and 100%. |
| Light intensity reduction due to low battery: | Configurable by the user. |

| Materials and environment | |
|---------------------------|--|
| Lantern: | Marine aluminium, with polyurethane finishing. |
| Lens cover: | UV stabilised tempered glass. |
| Shock resistance: | MIL-STD-202G, method 213B. |
| Watertightness degree: | IP 67. |
| Fixings: | 4 bolts in a 200mm diameter. |
| Humidity resistance: | 100%. Pressure-compensation valve to avoid condensation. |
| Temperature range: | From -30° to 70°C. |
| Inside hardware: | Stainless steel. |

| MBL 400-LD | PEAK INTENSITIES (Cd) |
|--------------|-----------------------|
| Power | Blanco ■ |
| 30W | 7,500 |
| 60W | 15,000 |
| 80W | 20,000 |

| MBL 400-LD | PEAK INTENSITIES (Cd) |
|--------------|-----------------------|
| Power | Green ■ |
| 29W | 3,000 |
| 56W | 6,000 |
| 113W | 12,000 |

| MBL 400-LD | PEAK INTENSITIES (Cd) |
|--------------|-----------------------|
| Power | Red ■ |
| 16W | 1,700 |
| 32W | 3,400 |
| 64W | 6,800 |

| Options |
|---|
| Infrared (IR) programmer. |
| PC programming kit. |
| RS-485 MODBUS serial port. |
| Other specifications available under request. |
| MBL 400-LD-SYNC (GPS synchronisation). |
| MBL 400-LD-TG (GSM remote monitoring). |
| MBL 400-LD-TR (Radio remote monitoring). |
| MBL 400-LD-TS (Satellite remote monitoring). |
| MBL 400-LD-AIS (AIS AtoN). |



MEDITERRÁNEO SEÑALES MARÍTIMAS, S.L.L.
 mesemar@mesemar.com • www.mesemar.com

