



PHOTOVOLTAIC MODULES

IS10P-IS20P-IS30P-IS40P-IS50P



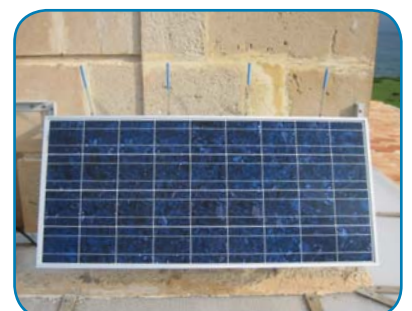
IS10P, IS20P, IS30P, IS40P and IS50P photovoltaic modules are composed of 36 high efficiency polycrystalline cells, manufactured with the most innovative technologies of isotropic texturization and antireflecting coating.

Encapsulation of cells is made between a high-transmission tempered glass and a plastic. The encapsulant in Ethylene Vinyl Acetate (EVA) covers the photovoltaics cells within the laminate thus protecting them from etching. The texturization of the glass enables a maximum concentration and diffusion of the light on the solar cells.

This allows us to guarantee a high performance, power and working capability even in lower sunlight conditions. The Tedlar backside contributes to a further protection of the module against the action of climatic agents like humidity and dust, and provides a total electrical isolation.

FEATURES

- ✓ IS10P, IS20P, IS30P, IS40P and IS50P modules use an anodized transparent and reinforced aluminium frame, highly resistant to marine conditions.
- ✓ IP 65 watertightness degree. The modules are totally sealed to prevent water ingress.
- ✓ Certifications:
 - TÜV 11-PPV-0000108/05-W02-TIC.
 - CEI/EN 61215 Ed. 2.
 - CEI/EN 61730 1-2 (2007). **CE**
- ✓ High performance, even under low sunlight levels.
- ✓ Maximum concentration and diffusion of light on the solar cells.
- ✓ Cell protection through EVA encapsulation.
- ✓ Tedlar coating for a further protection of the module against humidity and dust, providing a total electrical isolation.
- ✓ IP 65 Tyco waterproof junction box (fitted with 2 nos. by-pass diodes on IS50P modules).

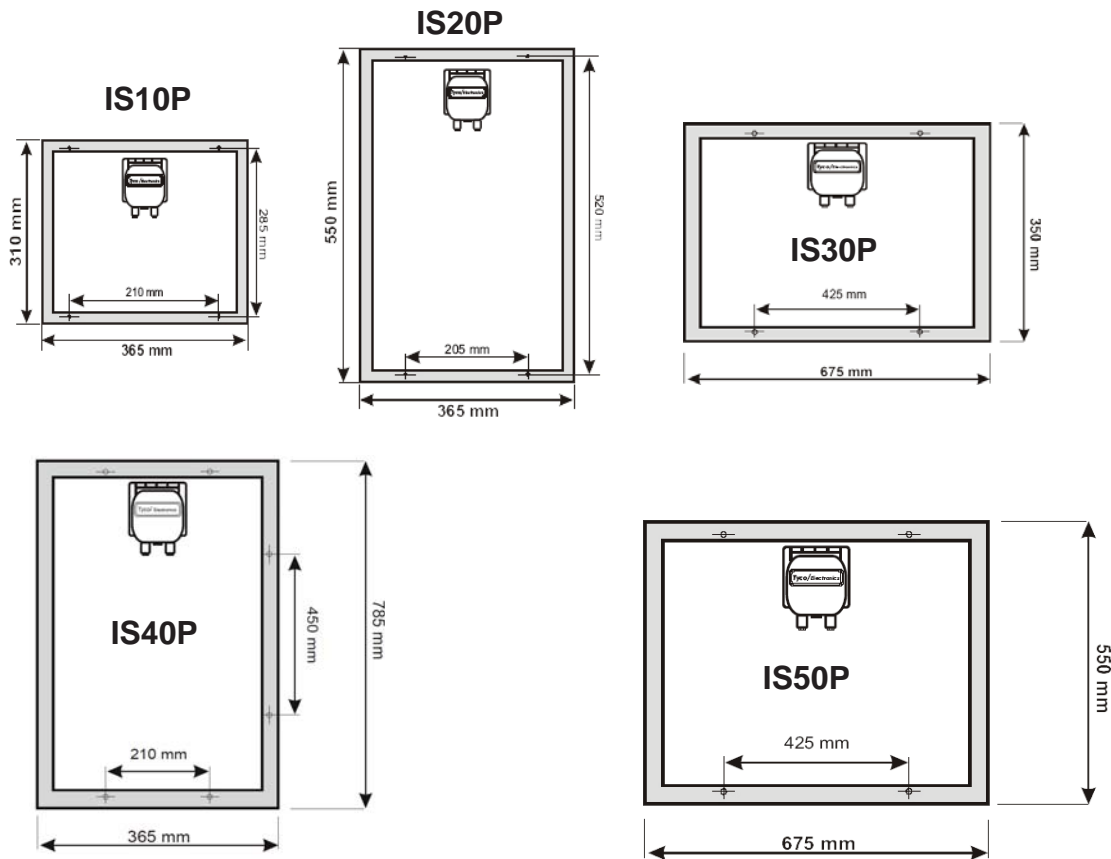


PHOTOVOLTAIC MODULES

IS10P-IS20P-IS30P-IS40P-IS50P



Specifications subject to change without previous notice.



MODEL	Technical Data				
	IS10P	IS20P	IS30P	IS40P	IS50P
Power	10 Wp	20 Wp	30 Wp	40 Wp	50 Wp
Nominal voltage	12.0V				
Maximum power current (Imp)	0.6 A	1.2 A	1.63 A	2.4 A	2.69 A
Short circuit current (Isc)	0.67 A	1.34 A	1.68 A	2.5 A	2.82 A
Open circuit current (Voc)	21.6V		22.2V	22.2V	22.3V
Maximum power voltage (Vmpp)	17.0V		18.4V	18.4V	18.6V
NOCT	(+/-) 45°C				
Maximum system voltage	1,000V				
Temperature range	From -40° to +85°C				
Hail resistance	Up to 25 mm at 90 km/h				
Relative humidity	Up to 100%				
Dimensions (+/-2mm)	365x310x35	365x550x35	350x675x35	550x675x35	645x675x35
Weight	1.6 kg	3.0 kg	5.0 kg	5.0 kg	6.0 kg
Tolerance	+/-3%				



MEDITERRÁNEO SEÑALES MARÍTIMAS, S.L.L.
 mesemar@mesemar.com • www.mesemar.com

